

Russell T. Blackwood has been elected to succeed the late Frank R. Rohrman as president of the Philadelphia Wholesale Drug Company.

OBITUARY.

JAMES DIXON NUTT.

James D. Nutt, member of the AMERICAN PHARMACEUTICAL ASSOCIATION, died suddenly at his home in Wilmington, N. C., July 2nd, aged 70 years. Mr. Nutt was born in Wilmington and had resided there during all of his life. He formerly conducted the well-known Nutt drug store and for a number of years prior to his demise was the proprietor of Munds'

Pharmacy. We quote from an editorial of the home paper in saying that the deceased never lost an opportunity to champion the cause and the welfare of Wilmington. His life was a noble example of civic pride and intense loyalty. He went his way quietly, devoted to his family, friends and city. He was an inspiration in a great many ways to those with whom he came in contact.

The funeral was largely attended.

The deceased is survived by his widow and one daughter, Mrs. W. E. Crews. He was a prominent member of the Knights of Pythias and a member of the Episcopal church.

Mr. Nutt was very much interested in the progress of the Headquarters A. Ph. A.

SOCIETIES AND COLLEGES.

THE RAPID CITY MEETING OF THE AMERICAN PHARMACEUTICAL ASSOCIATION.

The time for the meetings in Rapid City is fast approaching. The General Program of the ASSOCIATION is given under "Association Business" of this issue of the JOURNAL.

The program of the American Association of Colleges of Pharmacy follows in this Department.

The names of the chairmen of the Local Committees follow and also a partial list of the entertainment features.

HOTELS—RAPID CITY.

Alex Johnson Hotel—Headquarters.

Rooms with running water \$1.75 and \$2.00, single.

Rooms with connecting bath and toilet, \$2.50 to \$4.50, single.

Rooms with private bath and toilet, \$3.00 to \$5.00, single.

Two-Room Apartments, \$9.00, single.

Patton Hotel.

Rooms with running water, \$1.00 to \$2.50, single.

Rooms with bath, \$2.00 to \$3.00, single.

Harney Hotel.

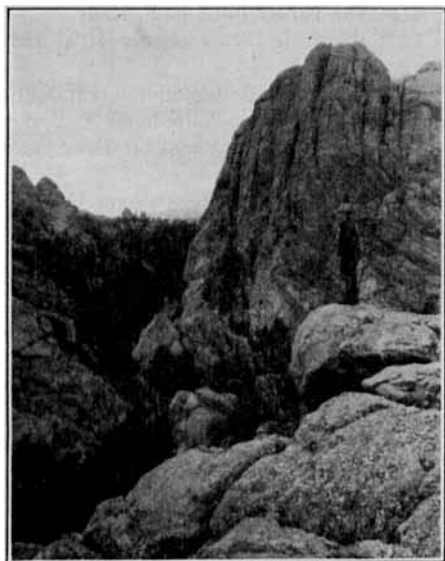
Rooms without bath, single, \$1.25 per day up. Double, \$2.75 per day up.

Rooms with bath, single, \$2.50 per day up. Double, \$4.50 per day up.

Meals a la carte.

CHAIRMEN OF LOCAL COMMITTEES.

- Executive..... F. W. Brown
- Entertainment..... C. L. Doherty
- Finance..... R. H. Ottman
- Hotels..... Charles Fallon
- Information..... Charles Hunt
- Publicity (National)..... George A. Bender
- Publicity (Local)..... R. L. Bronson
- Reception (General)..... C. B. Baldwin



Mount Rushmore, Black Hills. Here the gigantic busts of Washington, Jefferson, Lincoln and Roosevelt are being carved.

The program of the National Association of Boards of Pharmacy is given in the Department of that organization.